



D A R A N E N E R

NEO Series Power Station

Appearance and Technology Coexist
With Best Quality and Cost-Effective



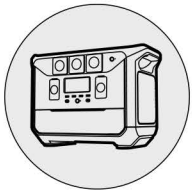
2-Year



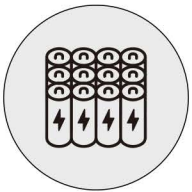
Warranty

True peace of mind with full protection

Introduction to NEO series power station



Product Series
PI Design



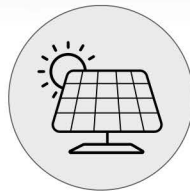
LFP safety batteries



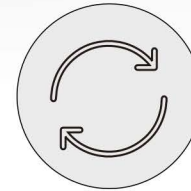
Super fast charging
(Bi-directional Inverter
Technology, charge to
full in 2 hours)



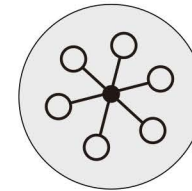
**Low failure rate
and stable quality**



**High-power
solar charging**



**High-power
UPS function**



**Support parallel and
series unit function**
at the same, up to 6 unit



**Support APP/4G/portable
home energy storage all-in-one**



A 3D rendering of a battery pack. It features a grid of glowing cylindrical cells, likely representing LFP (Lithium Iron Phosphate) cells, arranged in a rectangular block. A bright blue light beam shines down from above, illuminating the top of the cells. The entire assembly is housed within a dark, rectangular frame.

Super Fast Charging Technology

Bidirectional inverter technology, charges to full in 2 hours, say goodbye to bulky adapters

NEO Series Use LFP Safety Cells

The cycles life ≥ 3500 times

Super Fast Charging Technology

EV-grade battery, safe and stable, high temperature resistance

Core Function

Multiple Unit Parallel/Series Function

- Industry-leading parallel units technology. The voltage is unchanged and the power is superimposed, support the maximum number of 6 units in parallel
- Can use the series units function at the same time. Voltage superposition, capacity superposition, support the maximum number of 6 units in series
- NEO 600W-5000W power station support multiple units simultaneously parallel/series function.

6X2000W



Explore NEO Portable Power Stations

EV Grade LiFePO4 Batteries

EV grade LiFePO4 batteries specialized in high-end applications such as electric and hybrid vehicles. Due to the stringent requirements for consistency, even if the same LiFePO4 battery, the quality and performance of EV grade is much higher than ordinary grade.



EV grade LiFePO4 batteries specialized in high-end applications such as electric and hybrid vehicles. Due to the stringent requirements for consistency, even if the same LiFePO4 battery, the quality and performance of EV grade is much higher than ordinary grade.



Recharge NEO2000 to 100% in

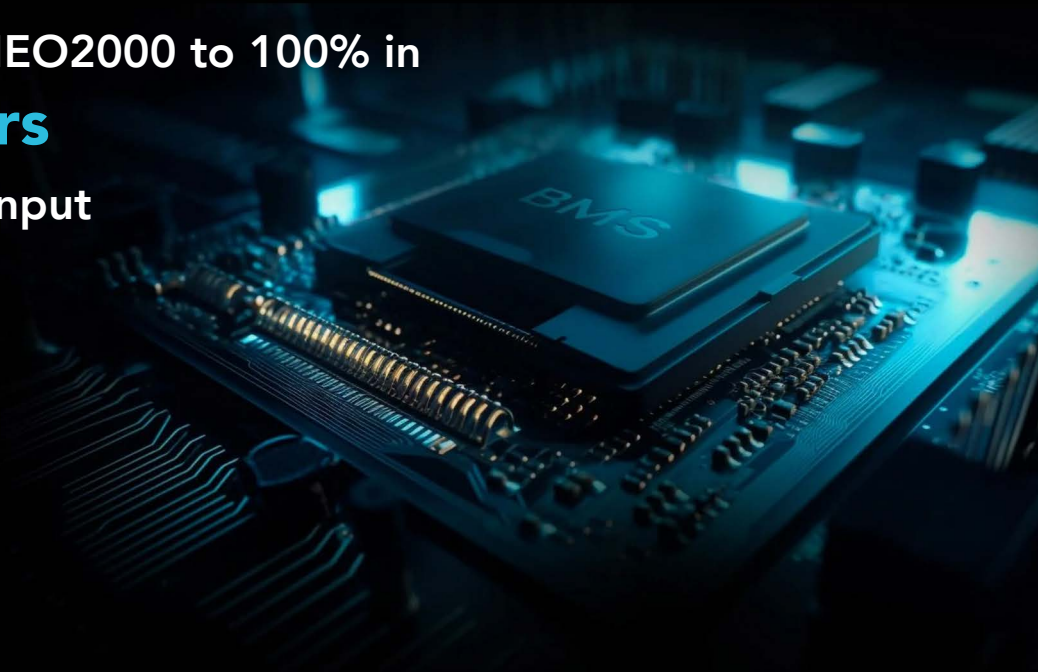
3.3 Hours

Max Solar Input

600W

Safety from the Inside Out

- Over-charging & discharging
- Over-current
- Over-voltage
- Under-voltage
- Over-temperature
- Low-temperature



DaranEner NEO2000 Portable Power Station

3500+ cycles



Coffee Maker
(1500 W)
20 Times



Heat Pump
(12,000 BTU)
2.3 Hours



Microwave
(1.2 cu. ft.)
2 Hours



Fridge
(18 cu. ft.)
20 Hours



LiFePO4 BATTERY
SAFELY USE IT
10 YEARS

DaranEner NEO2000

Others





NEO600 Power Station

BATTERY

Battery Type:	LifeP04
Cycle Life:	Approx 3500 Cycles at 80% DOD

INPUT

DC Input:	10-19V 3.42A (90W Max)
AC Input:	220V (1000W)
Solar Input:	18V 5A /20V 5A (100W Max)

OUTPUT

AC Output Power:	600W (1200W Max)
------------------	------------------



NEO1500 Power Station

BATTERY

Battery Type:	LifeP04
Cycle Life:	Approx 3500 Cycles at 80% DOD

INPUT

DC Input:	-
AC Input:	220V (1000W Max)
Solar Input:	XT60 33~60V/20A (600W Max)

OUTPUT

AC Output Power:	1500W(2000W Max)
------------------	------------------



NEO2000 Power Station

BATTERY

Battery Type:	LifeP04
Cycle Life:	Approx 3500 Cycles at 80% DOD

INPUT

DC Input:	-
AC Input:	220V (2400W Max)
Solar Input:	XT60 33~60V/20A (600W Max)

OUTPUT

AC Output Power:	2000W (Max 2700W)
------------------	-------------------



NEO200 Power Station

BATTERY	
Battery Capacity:	22.4V≈8A
AC OUTPUT	
AC Output Power:	200W (400W MAX)
AC Output Voltage:	220V~240V Sine wave
Charging Time:	3.5 Hours
Cell Type:	LiFePO4
Ports:	1x AC Socket, 1x USB-C, 2x USB-A, 1x Car Port, 1W LED Panels Light



NEO200 Plus Power Station

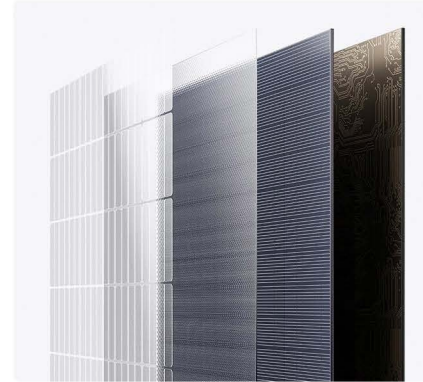
BATTERY	
Battery Capacity:	22.4V≈9A
AC OUTPUT	
AC Output Power:	200W (400W MAX)
AC Output Voltage:	220V~240V Sine wave
Charging Time:	1.5 Hours
Cell Type:	LiFePO4
Ports:	1x AC Socket, 3x DC Ports, 2x USB-C, 2x USB-A, 1x Car Port, 1W LED Panels Light

DaranEner Solar Panels

Take advantage of the green, endless solar

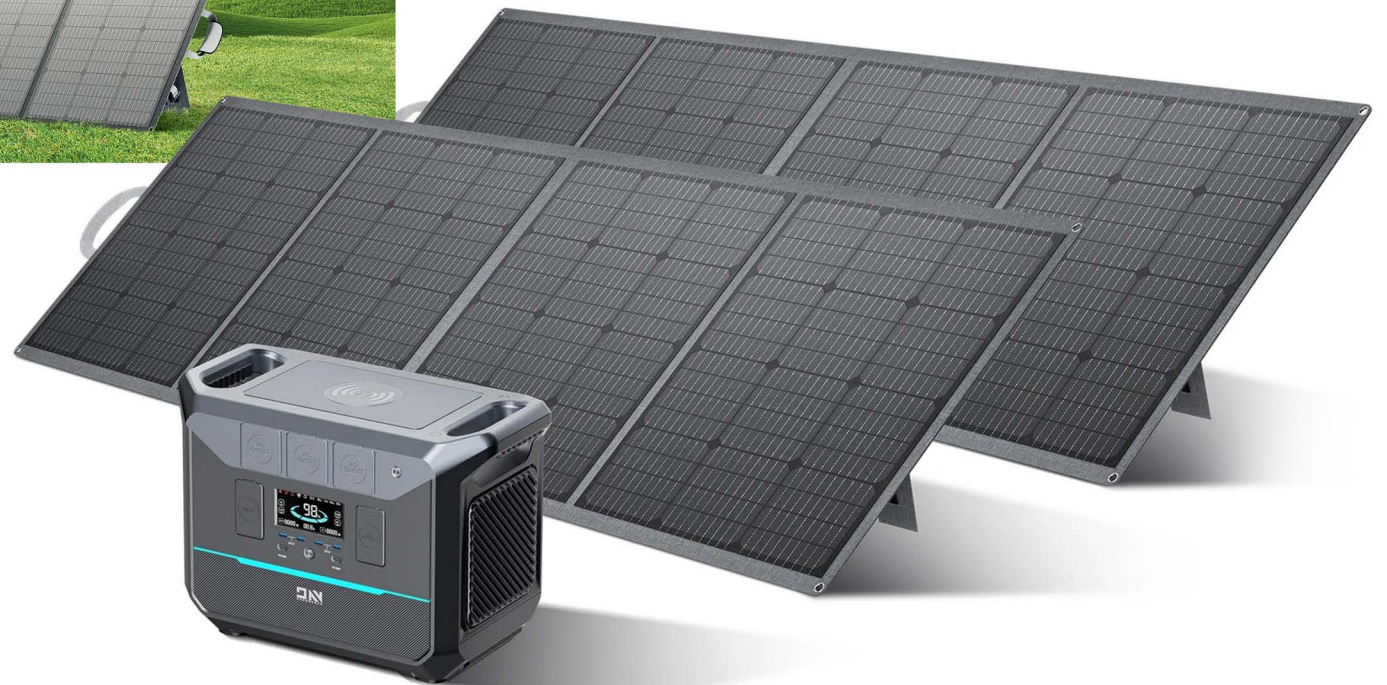
When you're in the middle of sunny nature, take advantage of the green, endless solar energy with our brand of portable power stations. Equipped with a solar input of up to 600 watts, you can quickly and easily charge your power station outdoors and keep it performing at its best.

Turbo Solar Charging Mode $\approx 3.3\text{Hrs}$



ETFE is a lightweight and environmentally sustainable and highly transparent material that allows more sunlight to reach the solar cells, resulting in higher energy yields.

The **ETFE** encapsulation process also provides excellent resistance to harsh environmental conditions, such as extreme temperatures, high winds, hail, and heavy rain, ensuring the solar panel's longevity and reducing the need for maintenance.





SP100 Solar Panel | 100W

- Foldable and weighs only 7.1 lbs
- Durable with IP54 waterproof rating
- ETFE for durability, flexibility and superior light transmission
- Up to 22% photoelectric conversion efficiency

SPECIFICATIONS

Rated Power: 100W

Open Circuit: 24.0V

Rated Voltage: 20.0V

Rated Current: 5.0A

Photoelectric Conversion Efficiency: 22%

Solar Cell Types: Monocrystalline Silicon



SP200 Solar Panel | 200W

- Foldable and weighs only 13.7 lbs
- Durable with IP54 waterproof rating
- Self-cleaning ETFE film protection
- Up to 22% photoelectric conversion efficiency

SPECIFICATIONS

Rated Power: 200W

Open Circuit: 48.0V

Rated Voltage: 40.0V

Rated Current: 5.0A

Photoelectric Conversion Efficiency: 22%

Solar Cell Types: Monocrystalline Silicon



SP300 Solar Panel | 300W

- Foldable and weighs only 13.7 lbs
- Durable with IP54 waterproof rating
- Self-cleaning ETFE film protection
- Up to 22% photoelectric conversion efficiency

SPECIFICATIONS

Rated Power: 300W

Open Circuit: 43.5V

Rated Voltage: 36.3V

Rated Current: 5.0A

Photoelectric Conversion Efficiency: 22%

Solar Cell Types: Monocrystalline Silicon



JOHANNESBURG

500, 16th Road
Randjespark,
Midrand, 1684

Tel: +27 (011) 357 8080

Fax: +27 (011) 357 8082

CAPE TOWN

12 Woodbridge Business Park,
452 Koeberg Road,
Milnerton, 7441

Tel: +27 (021) 528 8000

Fax: +27 (021) 528 8055

DURBAN

Unit 1, Pelican Place
61 Siphosethu Road,
Mount Edgecombe, 4302

Tel: +27 (031) 537 4912

Fax: +27 (031) 537 4988